



INSTALLATION

BLACK ERGO II/MINI ARMS/TRIDENT DUALLY PEGS 3995

PARTS INCLUDED

- 2 Mini Ergo Arms
- 1 Set of Trident Dually Pegs with Clevises
- 1 Left Ergo II Mount
- 1 Right Ergo II Mount
- 1 Hardware Kit including:
 - 4 Adjustable Stops for Ergo II—**2 Extra for Replacements**
 - 2 1/2"-13 x 1-1/4" Button Head Cap Screws
 - 2 1/2" Wave Washers
 - 4 1/8" x 5/16" Roll Pins
 - 2 1/2"-13 x 3/4" Socket Head Cap Screws
 - 4 3/8"-16 x 5/8" Set Screws
 - 1 Anti Seize Packet
- 1 Installation Instructions

Please read and understand entire instructions before starting installation.

THANK YOU FOR CHOOSING KÜRYAKYN!

IN ORDER TO PROTECT YOU AND OTHERS FROM POSSIBLE INJURY AND/OR PROPERTY DAMAGE OR LOSS, PLEASE PAY CLOSE ATTENTION TO ALL INSTRUCTIONS, WARNINGS, CAUTIONS AND NOTICES REGARDING THE USE AND CARE OF THIS PRODUCT.

WARNING

THIS INDICATION ALERTS YOU TO THE FACT THAT IGNORING THE CONTENTS DESCRIBED HEREIN CAN RESULT IN POTENTIAL DEATH OR SERIOUS INJURY.

NOTICE

This indication alerts you to the fact that ignoring the contents described herein may negatively affect product performance and functionality.

NOTICE

IF INSTALLING THIS PRODUCT FOR ANOTHER PARTY, PLEASE MAKE SURE THEY RECEIVE THIS COPY OF THE INSTALLATION INSTRUCTIONS SO THEY ARE AWARE OF THE IMPORTANT INFORMATION CONTAINED IN THEM.

TOOLS SUGGESTED

Set of Hex Wrenches, Socket Set with Ratchet

STRICTLY OBSERVE THE FOLLOWING GUIDELINES IN ORDER TO USE THE PRODUCT PROPERLY AND AVOID POTENTIALLY DANGEROUS ACCIDENTS.

STEP 1

Read and understand all steps in the instructions before starting the installation. Park the motorcycle on a hard, level surface and turn off the ignition. Let cool.

NOTE: Pictures shown of Chrome parts. Installation of Black parts will be the same.

WARNING

YOU WILL BE WORKING AROUND THE ENGINE AND EXHAUST SYSTEM DURING INSTALLATION. ENSURE THAT THE ENGINE AND EXHAUST SYSTEM HAVE FULLY COOLED TO PREVENT INJURY.

CUSTOMER SERVICE

877.370.3604 (toll free)

INSTALLATION QUESTIONS

techsupport@kuryakyn.com
or call 715.247.2983

LIMITED WARRANTY

Kuryakyn warrants that any Kuryakyn products sold hereunder, shall be free of defects in materials and workmanship for a period of one (1) year from the date of purchase by the consumer excepting the following provisions:

- Kuryakyn shall have no obligation in the event the customer is unable to provide a receipt showing the date the customer purchased the product(s).
 - The product must be properly installed, maintained and operated under normal conditions.
 - Kuryakyn makes no warranty, expressed or implied, with respect to any gold plated products.
 - Kuryakyn shall not be liable for any consequential and incidental damages, including labor and paint, resulting from failure of a Kuryakyn product, failure to deliver, delay in delivery, delivery in nonconforming condition, or for any breach of contract or duty between Kuryakyn and a customer.
- Kuryakyn products are often intended for use in specific applications. Kuryakyn makes no warranty if a Kuryakyn product is used in applications other than intended.
- Kuryakyn electrical products are warranted for one (1) year from the date of purchase by the consumer. L.E.D.'S contained in components of Kuryakyn products will be warranted for defects in materials and workmanship for 3 years from the date of purchase where as all other components shall be warranted for one(1) year. This includes, but is not limited to; control modules, wiring, chrome & other components.
- Kuryakyn makes no warranty of any kind in regard to other manufacturer's products distributed by Kuryakyn. Kuryakyn will pass on all warranties made by the manufacturer and where possible, will expedite the claim on behalf of the customer, but ultimately, responsibility for disposition of the warranty claim lies with the manufacturer.

ABOUT OUR CATALOG

For purchasing Kuryakyn® products, you can receive a complete catalog free of charge. Send the Proof-of-Purchase below with your address to: Kuryakyn, P.O. Box 339, Somerset, WI 54025. Please indicate either Accessories Catalog for Harley-Davidson® or GL & Metric Cruisers.

Be sure to ask your local dealer about other Kuryakyn® products, the motorcycle parts and accessories designed for riders by riders.

©2005 Kuryakyn USA® All Rights reserved.



kuryakyn.com

NOTICE

Use the supplied anti-seize for all fasteners; this will prevent galling and make future removal of fasteners easier.

Kuryakyn

INSTALLING CLAMP AND ARM

NOTICE

Mini Arms are suggested to be mounted above engine guard to avoid a great reduction in cornering clearance. FIG 1

STEP 2

Locate the left (sitting on bike) mount; the mounts are side specific so be sure you have the correct mount before attempting the installation. Visually inspect the angle where the arm will be attached. The mount is angled slightly back, toward the rider, **NOT FORWARD**. PIC 1

STEP 3

Remove the four 1/4"-20 fasteners securing the left mount together and separate the upper and lower halves.

NOTICE

Determine the mounting location and orientation of the Ergo II Mounts before fully tightening the fasteners. The Ergo II Mounts may leave marks when tightened down.

NOTE: Before tightening any fasteners, review the adjustment procedures on Page 3. This will assist you in placing the Ergo II's in the desired position and minimize the need to further adjust them.

STEP 4

Insert the adjustable stop into the lower half of the mount. PIC 2 Thread two of the included 3/8"-16 set screws into the bottom of the mount. Install the mount onto the engine guard. Loosely secure the mount with the four 1/4"-20 fasteners. Do not tighten at this time. PIC 3

STEP 5

Secure the Mini Arm to the cogged portion of the mount using one of the 1/2"-13 x 1-1/4" Button Socket Cap Screws and Wave washers (PIC 4) making sure the cogs on the Mini Arm line up with the cogs on the mount. The Mini Arm should be positioned level with or above the engine guard. FIG 1 Leave finger tight for now.

STEP 6

Insert two roll pins into the holes in the clevis. PIC 5 Determine the desired position of the foot peg using the positioning holes in the Mini Ergo Arm. PIC 5



WARNING FOOTRESTS MUST BE INSTALLED SO THEY WILL FOLD UPWARD AND REARWARD IF HIT BY ANY OBJECT. FAILURE TO ADJUST THE FOOTRESTS TO OPERATE IN THIS MANNER COULD RESULT IN SERIOUS INJURY OR DEATH.

STEP 7

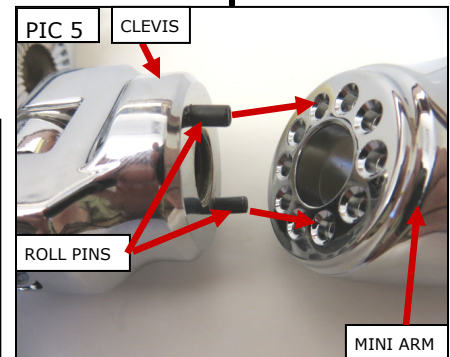
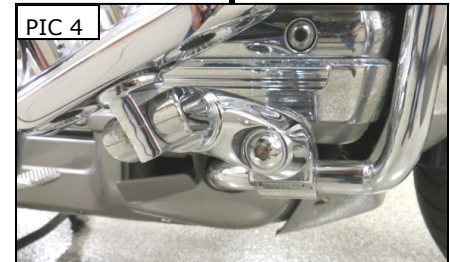
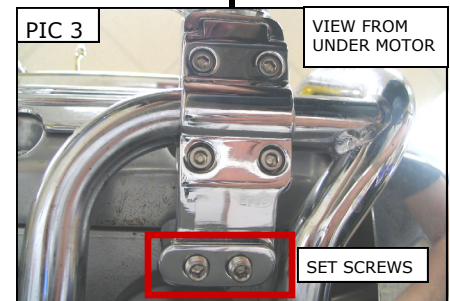
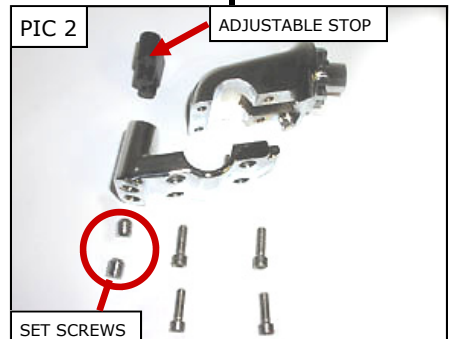
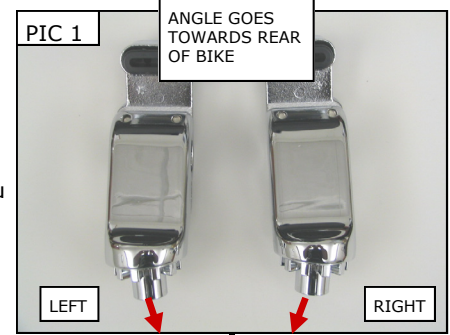
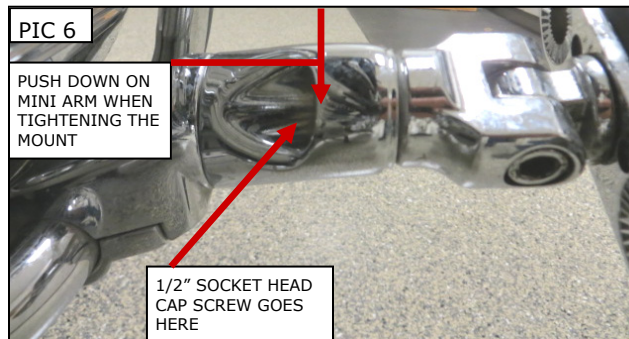
Insert the 1/2"-13 x 1-1/4" Socket Head Cap Screw through the back of the Mini Arm and thread it into the clevis. Make sure the roll pins in the clevis line up with holes on the Mini Arm. PIC 6 The roll pins will be pressed in as you tighten the clevis. Leave finger tight for now.

STEP 8

Push down slightly on the Mini Arm and adjust the two setscrews below the adjustable stop to fine tune the up/down angle of the mount and footrest. PIC 3

STEP 9

Push down slightly on the Mini Arm (PIC 6) while tightening the four fasteners in the bottom of the mount to take up any slack between the mount and the bottom of the engine. Tighten securely.



PAGE
2

-cont.-

ERGO II/MINI ARMS/TRIDENT PEGS

INSTALLATION

STEP 10 Loosely install one of the Trident Dually Pegs into the clevis on the Mini Arm.

STEP 11 Repeat Steps 2 through 10 for the right side.

STEP 12 Continue to the adjustment and tightening procedures.

ADJUST POSITION OF MINI ARM AND TRIDENT DUALLY PEGS

STEP 13 Adjust for Longer or Shorter Inseam Lengths:

- Loosen the 1/2"-13 Button Head Fastener securing the Mini Arm to the mount. Pull the Mini Arm out of the interlocking cogs.
- Rotate the Mini Arm to the desired position then push the arm back into the interlocking cogs; be sure the Mini Arm is either level with the engine guard, or above the engine guard. **NEVER position the Mini Arm below the engine guard!** FIG 1 Tighten the 1/2"-13 fastener securely.

WARNING IT IS THE INSTALLERS RESPONSIBILITY TO ENSURE THERE IS SUFFICIENT CORNERING CLEARANCE BEFORE RIDING. ALWAYS POSITION THE MINI ARM EITHER LEVEL WITH, OR ABOVE THE ENGINE GUARD. POSITIONING THE MINI ARM BELOW THE ENGINE GUARD WILL GREATLY DECREASE CORNERING CLEARANCE WHICH MAY CAUSE LOSS OF CONTROL RESULTING IN SERIOUS INJURY OR DEATH.

STEP 14 Adjust the Clevis Angle:

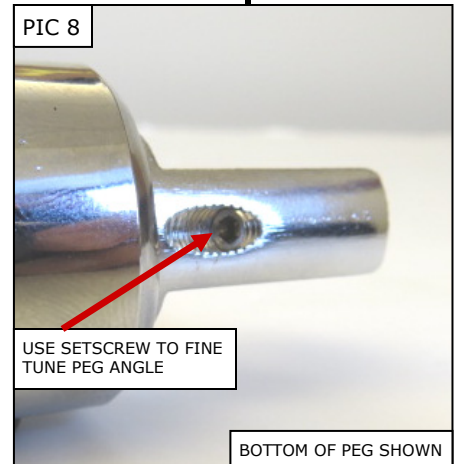
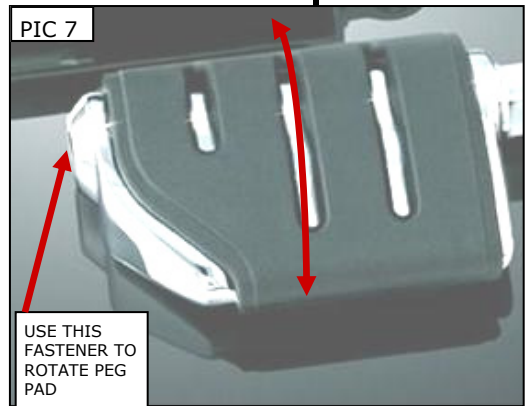
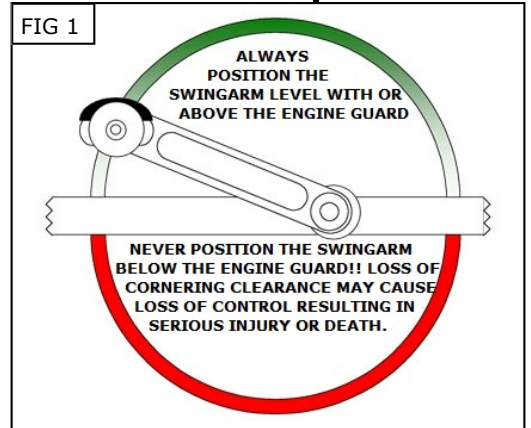
- Loosen the 1/2-13 Hex Head Fastener securing the Mini Arm to the clevis. Pull outward on the clevis and Trident Dually Peg to clear the roll pins.
- Rotate the clevis and Trident Dually Peg assembly to the desired angle then push the assembly back into the Mini Arm, making sure the roll pins in the clevis line up with the holes on the Mini Arm, and re-tighten the fasteners securely.

STEP 15 Adjust the Peg Angle:

Loosen the peg adjustment fastener (PIC 7) and rotate the peg to the desired position. Re-tighten the fastener.

NOTE: The male adapter in the Trident peg has a setscrew (PIC 8) that may be used to "fine tune" the peg angle. Threading the setscrew in, will tip the end of the peg towards you.

NOTICE It is the installer's responsibility to ensure that all of the fasteners (including pre-assembled) are tightened before operation of the motorcycle. Küryakyn will not provide warranty coverage on products or components lost due to improper installation or lack of maintenance. Periodic inspection and maintenance are required on all fasteners.



Ride On!